

# FLA: To the Classroom and Beyond





# FLA: To the Classroom and Beyond

Support presentation is brought to you by the Freshman Learning Academy Program, Borough of Manhattan Community College (BMCC)

Academics

- Classroom Support
- Academic Support
- Financial Literacy
- Career Development
- Health & Wellness
- Student Success

Community College Students

BMCC

About the Freshman Learning Academy

History of FLA

Organization Chart

Maximize Advisor-Student Relationship

Relates to Campus Departments

Receptor

FLA Advisors

Counselor\*

FLA Services Instructor

Student Advocate

Academic Advisor

FLA Classroom Structure

High Impact Activities

Group Activity

Please turn over the paper on your table.

Results

Start Here

Go Anywhere..

BMCC

Thank you

Questions?

Start Here

I just started college. How can I become more successful?

**Today's Presentation is Brought to You by:  
The Freshman Learning Academy Program  
Borough of Manhattan Community College (CUNY)**

**Presenters:**

**Dean Michael Gillespie**  
Associate Dean of Academic Affairs  
[mgillespie@bmcc.cuny.edu](mailto:mgillespie@bmcc.cuny.edu)

**Alexandra Pyak**  
Freshman Learning Academy Supervisor  
[apyak@bmcc.cuny.edu](mailto:apyak@bmcc.cuny.edu)

**Courtney Fusco**  
Freshman Learning Academy Advisor  
[cfusco@bmcc.cuny.edu](mailto:cfusco@bmcc.cuny.edu)



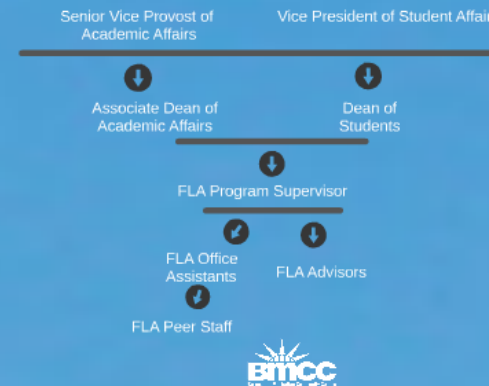
# About the Freshman Learning Academy



## History of FLA



## Organizational Chart





# 2008

The Odyssey Project - a research study funded by the NY Community Trust (NYCT) fund to study the challenges women of color faced while attending BMCC.

Dr. Precious Sellars-Mulhern  
Faculty-Counseling  
Department

Dr. Lisa Rose  
Faculty - Social Sciences

Dr. Marva Craig  
VP Student Affairs

Brian Haller  
Director Foundation and  
Corporate Relations



# 2009-2010

Findings show that the challenges faced by women are universal to the general population. One challenge is that students do not feel connected to the school or each other.



# 2010-2011

- Based on the Odyssey Project findings, BMCC Academic and Student Affairs Administrators begin to develop a plan for learning communities at BMCC.
- BMCC submits a grant proposal to the NYCT to partially fund a program that would help retain liberal arts undecided students.





# 2012

- The FLA Program launched
- FLA Supervisor and advisors were hired
- Incoming Liberal Arts students were admitted into the program
- 250 students were recruited for the Fall 2012 and 230 students for Spring 2013 semesters



# 2013-2014

- By Spring 2014, over 1100 students went through the FLA program
- 30 + Faculty Members
- 8 Student Aid Assistants
- 6 FLA Advisors

The program is under constant review and will be redesigned to fit the needs of the students.



# *Program Requirements*

- First-Time Freshman
- Liberal Arts Major
- Last Level developmental Reading and/or Writing Placements or Exempt





# Organizational Chart

Senior Vice Provost of  
Academic Affairs

Vice President of Student Affairs



Associate Dean of  
Academic Affairs



Dean of  
Students



FLA Program Supervisor



FLA Office  
Assistants



FLA Advisors



FLA Peer Staff

# Maximize Advisor-Student Relationship



Bridge to  
Campus  
Departments

Recruiter

FLA  
Advisors

Counselor\*



FLA  
Workshop  
Instructor

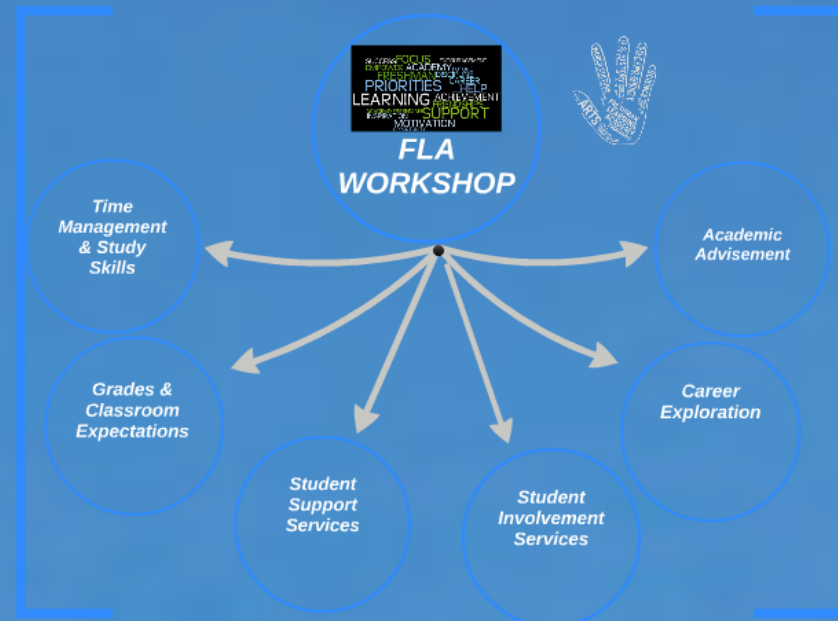
Student  
Advocate

Academic  
Advisor



# FLA Classroom Structure

## High Impact Activities





# High Impact Activities

*Writing  
Extensive*

*Global  
Studies*

*Service  
Learning*

★  
**E-Portfolio**



T  
Man  
&  
S

C  
C  
Ex



# FLA WORKSHOP



*Time  
Management  
& Study  
Skills*

*Academic  
Advisement*

*Grades &  
Classroom  
Expectations*

*Career  
Exploration*

*Student  
Support  
Services*

*Student  
Involvement  
Services*

# RESEARCH

Quasi-experiment

Propensity score matching for the comparison group

## Data Collection

- Pre & post: attitude, skills and knowledge surveys for students Grades and pass rates
- Course withdrawal/ retention rates, GPA

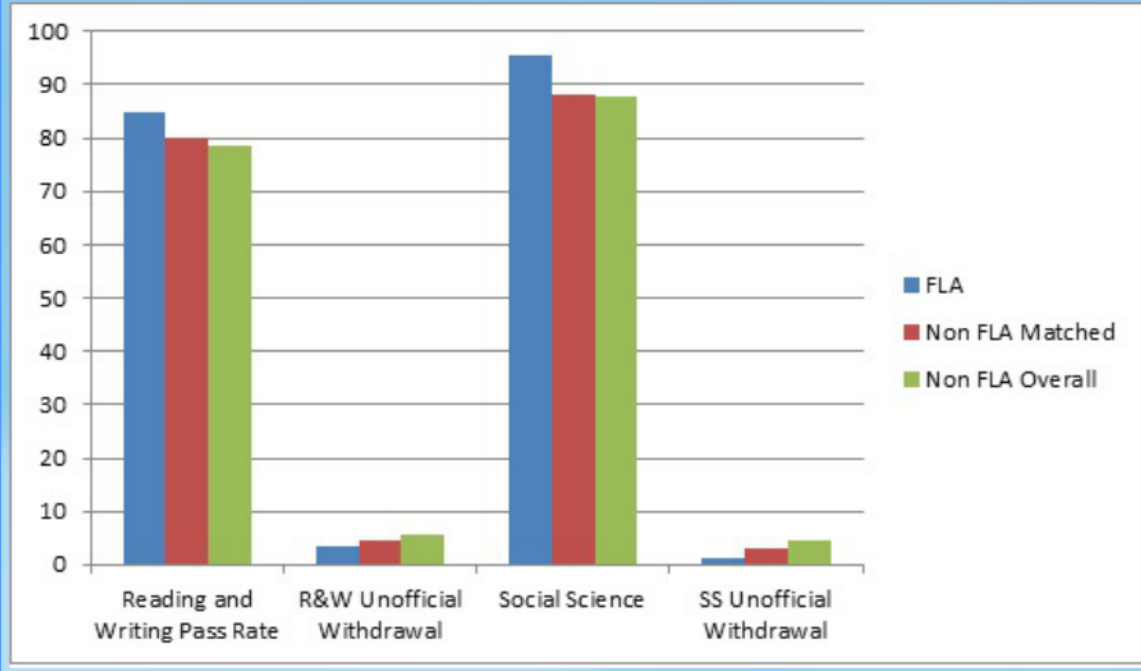
## Student Learning Outcomes

Expectations were that there would be evidence of:

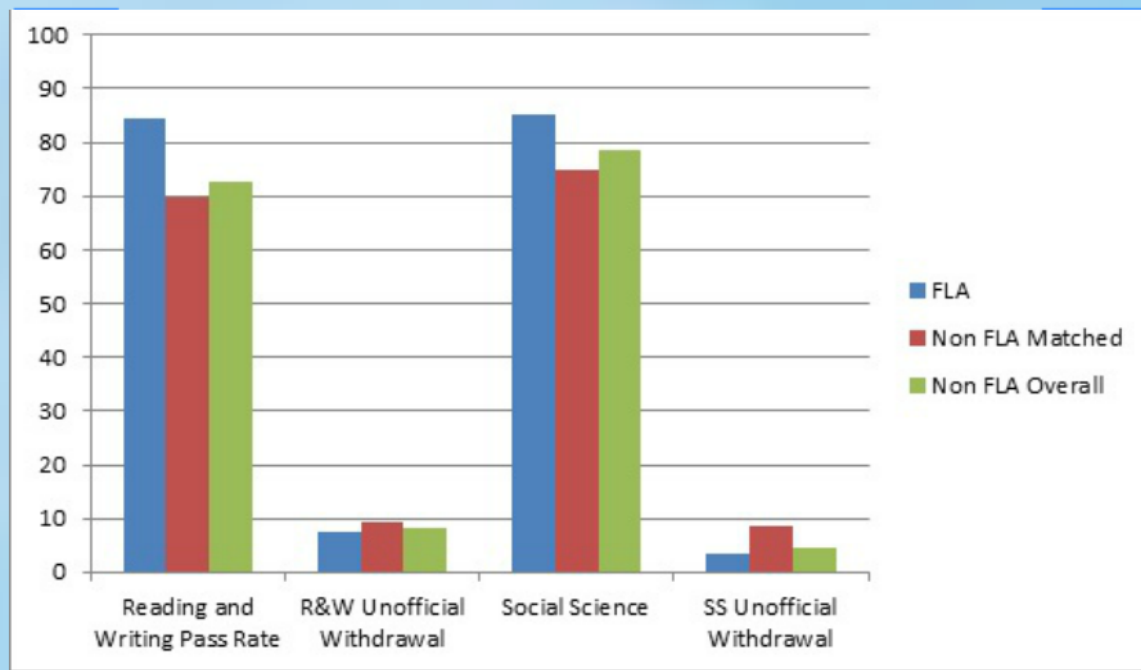
- 1) Learning equal or greater to students in equivalent non- FLA courses.
- 2) Bonding with other students, coordinators and instructors.
- 3) Class participation higher than in similar, non-FLA courses.
- 4) The ability to apply appropriate comprehension skills to the reading and materials.

# Results

FALL 2012



SPRING 2013



# Thank you!

# Questions ?

## Work Cited

BMCC Factbook 2011-2012. <http://www.bmcc.cuny.edu/iresearch/>

FLA Program Evaluation Report, Institutional Effectiveness & Strategic Planning, January 2013.

Freshman Learning Academy. Borough of Manhattan Community College, March 2014. (<http://www.bmcc.cuny.edu/fla/>)

Liberal Arts Freshman Academies: A Revised Proposal for the New York Community Trust, Borough of Manhattan Community College, July 2011.



**Today's Presentation is Brought to You by:  
The Freshman Learning Academy Program  
Borough of Manhattan Community College (CUNY)**

Presenters:

Dean Michael Gillespie  
Associate Dean of Academic Affairs  
mgillespie@bmcc.cuny.edu

Alexandra Pyak  
Freshman Learning Academy Supervisor  
apyak@bmcc.cuny.edu

Courtney Fusco  
Freshman Learning Academy Advisor  
cfusco@bmcc.cuny.edu

